

Welcome to St Philip's Nursery class 2020-2021

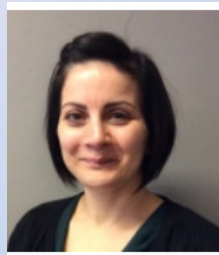


Staff

- Miss Kinch – Head Teacher

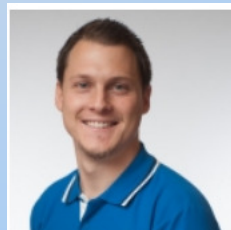


Miss Abbott – Class Teacher



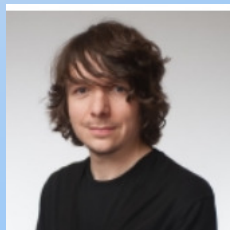
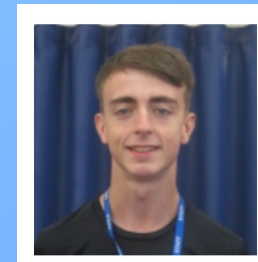
Mrs Green – Teaching Assistant

Miss Pantellaro – Teaching Assistant



- Mr Hayward – PE Teacher

- Mr Armstrong – PE Teaching Assistant



Mr Steadman – Child and Family Development Officer

- Ms Smedley – Learning Mentor



The school day

- We start school at 8.50 am
This is time for you to come into the classroom with your child to help them to settle into the school day.
- School finishes at 3.00 pm
- Breakfast and after school care will be available if you require it after the initial settling in period

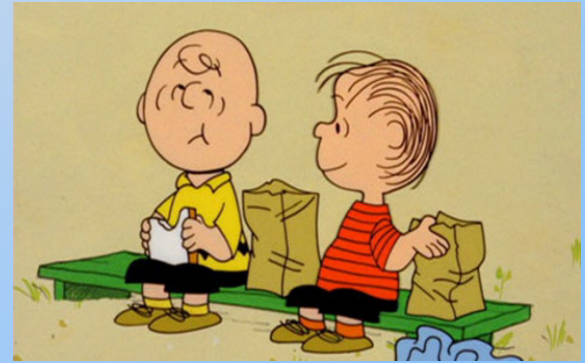


•Lunch

Lunch time is 11:45 – 12:45

A hot school lunch is £10.50 per week or you could bring a healthy packed lunch to school for your child

(Not nuts)



•Illness

If your child has sickness/ diarrhoea they must stay off school for **24hours after the sickness has stopped** to ensure the illness doesn't spread



Uniform

All children are expected to wear full St Philip's uniform every day:

- Black or grey shorts, trousers, skirt or pinafore dress
- White polo shirts
- Navy jumper/ cardigan (Available to order at school with the school logo)
- Summer dress (Optional)
- Black school shoes (No coloured logos/ pattern) NO LACES PLEASE
- Stud earrings (removed/ covered for PE)

Uniform

- Children will also need to bring a pair of wellington boots to leave at school for outdoor play
 - Please ensure children bring a warm, outdoor coat to school each day
 - No nail varnish/ makeup
-
- Children will need to bring a Physical Education kit into school so they can fully take part in lessons.
 - Plain white T-shirt
 - Black/ dark gray shorts
 - Dark pumps/ indoor sports shoes



Uniform

- Please bring a spare set of underwear and trousers to leave in your child's tray – accidents happen!

Please ensure your child's name is in ALL of their clothing

During the day we....

- Learn through play-
Indoors and outdoors

- Have group work-
Phonics
Maths
Literacy
Speech and Language

- All take part in whole class carpet time-
Singing
Literacy
Maths
Understanding of the world

Early Years Foundation Stage

Prime areas

- Personal, Social and Emotional Development
 - Making relationships
 - Managing feelings and behaviour
 - Self confidence and self awareness
- Physical Development
 - Moving and handling
 - Health and Self Care
- Communication and Language
 - Understanding
 - Speaking
 - Listening and Attention

Early Years Foundation Stage

Specific areas

- Maths
 - Numeracy
 - Shape, Space and Measure
- Understanding of the World
 - The World
 - People and Communities
 - Technology
- Expressive Arts and Design
 - Being Imaginative
 - Exploring and Using Media and Materials
- Literacy
 - Reading
 - Writing

How will I know how my child is doing?

- Parent/ Carer evenings
- End of year report

• Open door policy:

Each morning you are invited to come and settle your child into class, this also gives you the opportunity to have an informal chat with Nursery staff.

If you would like a specific meeting, you can arrange an appointment for a time out of school hours.



How will I know how my child is doing?

• Tapestry-

**An App for your phone/
tablet/accessible on the
computer.**



- This is a way staff and home can share children's learning.
- Staff will upload observations which are accessible with your own unique password so you can see what your children have been learning at school.
- Parents/Carers can also upload photos, videos and text to share children's interests at home too!